



Martin Drive | Stafford | ST16 1GN

£240,000

 **Webbs**
estate agents

Summary

** 5% DEPOSIT CONTRIBUTION ** NEW BUILD ** UPGRADED KITCHEN & FLOORING **

**KEY WORKER INCENTIVES ** CALL BRANCH ON 01889 583377 FOR MORE INFORMATION **

The Wilford is a two-bedroom MID TERRACED HOME, briefly comprising a through hallway, guest WC and generous lounge diner with French doors to the rear garden. Upstairs benefits from two double bedrooms, and each bedroom benefits from having an ENSUITE !! Externally there is a private rear garden and driveway.

Key Features

- BUYERS INCENTIVES
- 10 YEARS NHBC BUILDERS WARRANTY
- TWO ENSUITES
- MODERN KITCHEN & GUEST WC
- DRIVEWAY
- FABULOUS DEVELOPMENT
- TWO DOUBLE BEDROOMS
- SPACIOUS LOUNGE DINER
- PRIVATE REAR GARDEN
- READY MAY

Rooms and Dimensions

THROUGH HALLWAY

GUEST WC

SPACIOUS LOUNGE DINER
15'1" x 13'11" (4.612m x 4.248m)

MODERN KITCHEN
10'0" x 7'9" (3.057m x 2.378m)

LANDING

BEDROOM ONE
11'5" x 10'6" (3.504m x 3.211m)

ENSUITE SHOWER ROOM

BEDROOM TWO
13'4" x 8'7" (4.089m x 2.632m)

ENSUITE SHOWER ROOM

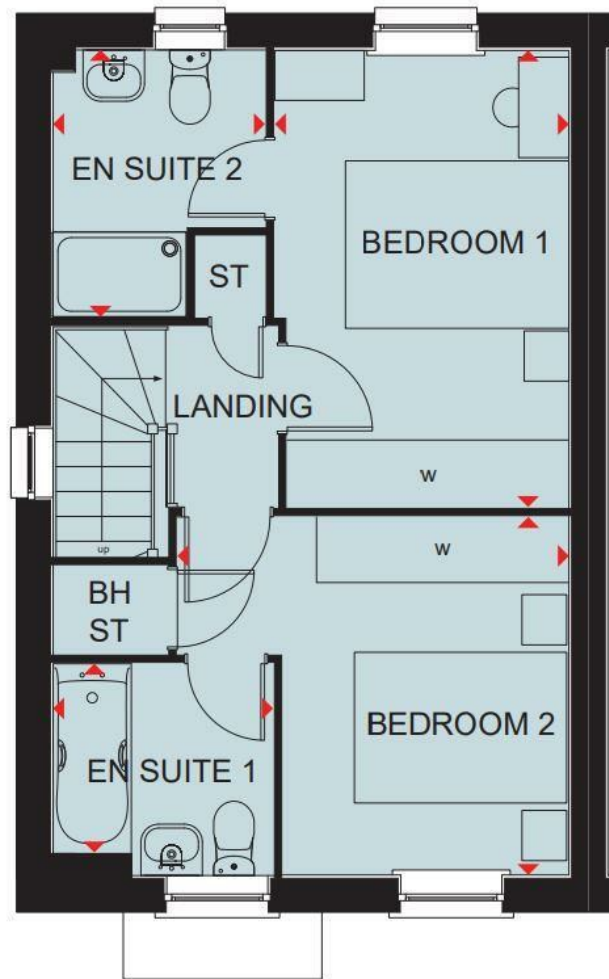
PRIVATE REAR GARDEN

DRIVEWAY

Identification Checks (R)







Webbs Estate Agents - endeavour to maintain accurate depictions of properties in Virtual Tours, Floor Plans and descriptions, however, these are intended only as a guide and purchasers must satisfy themselves by personal inspection.

